

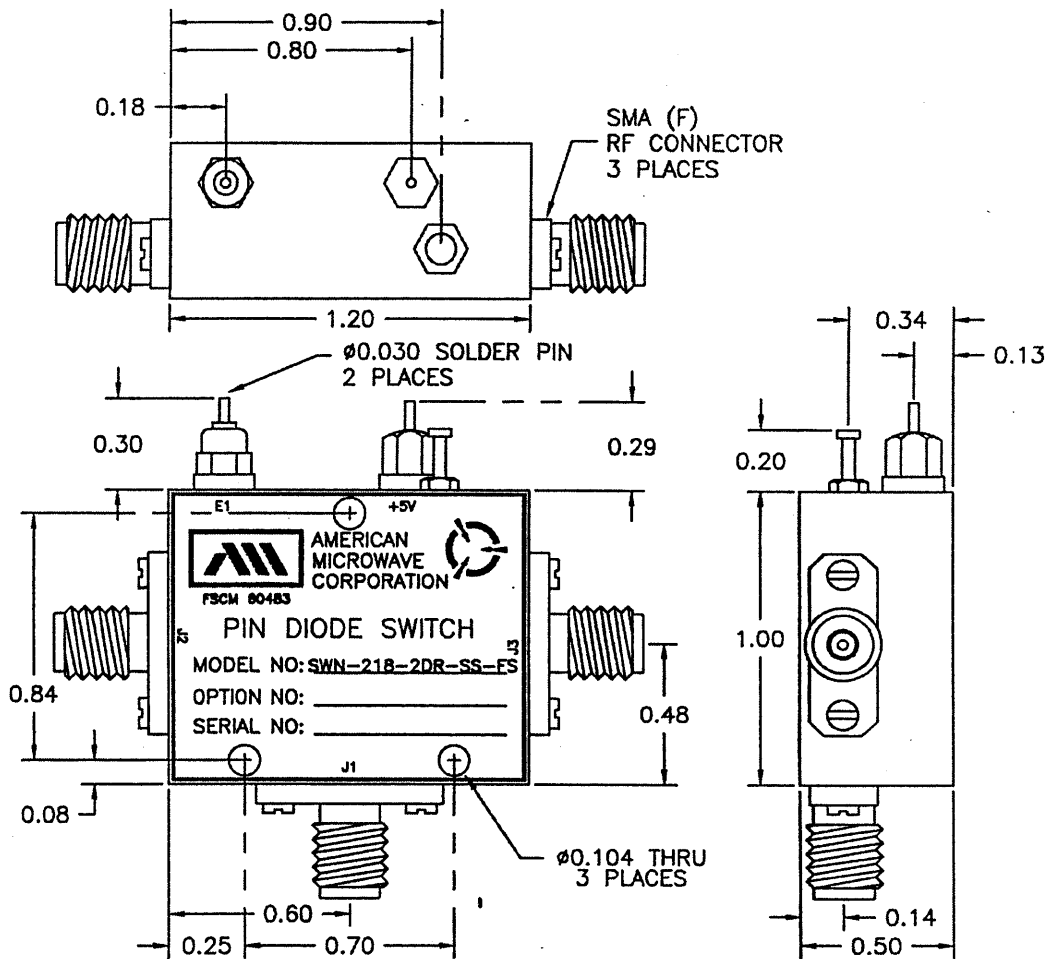
**DESCRIPTION:**

AMC MODEL SWN-218-2DR-SS-FS IS A SINGLE POLE TWO THROW, FAIL SAFE REFLECTIVE SOLID STATE SWITCH MODULE WITH VERY LOW INSERTION LOSS AND WITH INTEGRAL TTL DRIVER, DESIGNED FOR 2.2 TO 2.4 GHz OPERATION.

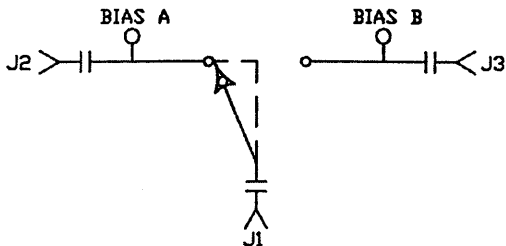
REVISIONS				
ZONE	REV.	DESCRIPTION	DATE	APPROVED
		ORIGINAL JOB# 008190E	11/29/00	

**SPECIFICATIONS:**

- FREQUENCY: ..... 2.2 GHz TO 2.4 GHz
- INSERTION LOSS: ..... -1.5 dB MAX.
- ISOLATION: ..... -22 dB MIN.
- VSWR (ALL PORTS): ..... -1.6:1
- SWITCHING SPEED: (50% TTL TO 90% RF) ..... 2 us MAX.
- CONTROL: ..... TTL SINGLE CONTROL
- POWER SUPPLY: ..... +5 VDC @ 100 mA MAXIMUM
- CONNECTORS (RF): ..... SMA FEMALE, 3 PLACES
- CONNECTORS (POWER): ..... SOLDER PINS
- CONNECTORS (CONTROL): ..... SOLDER PINS
- LOGIC "0": ..... J1 TO J2 (FAIL SAFE ARM)
- LOGIC "1": ..... J1 TO J3
- SIZE: ..... 1.20" (L) x 1.00" (W) x 0.50" (H)
- WEIGHT: ..... 1.5 OUNCE TYPICAL



**BLOCK DIAGRAM**



**ENVIRONMENTAL RATINGS:**

- TEMPERATURE: ..... -55°C TO +85°C (OPERATING)  
..... -65°C TO +125°C (STORAGE)
- HUMIDITY: ..... MIL-STD-202F, METHOD 103B COND. B
- SHOCK: ..... MIL-STD-202F, METHOD 213B COND. B
- VIBRATION: ..... MIL-STD-202F, METHOD 204D COND. B
- ALTITUDE: ..... MIL-STD-202F, METHOD 105C COND. B
- TEMPERATURE CYCLE: ..... MIL-STD-202F, METHOD 107D COND. A

ALL DIMENSIONS ARE IN INCHES  
TOLERANCES:

- X.XX ±0.020
- X.XXX ±0.010

NOTE: THE ABOVE SPECIFICATIONS ARE SUBJECT TO CHANGE OR REVISION

**CONFIDENTIAL AND PROPRIETARY**

APPROVALS		DATE	AMERICAN MICROWAVE CORPORATION FREDERICK, MARYLAND	
DRAWN WYP, R.R.A. CHECKED LA ISSUED DP	11/29/00 11/29/00 11/29/00		TITLE PRODUCT FEATURE SWN-218-2DR-SS-FS FAIL SAFE SOLID STATE SWITCH	
SIZE	FSCM NO.	DWG NO.	REV.	
A	60483	100-4427-14		
SCALE N/S			SHEET 1 of 3	

PAGE 4 (143-S-RA-1100)